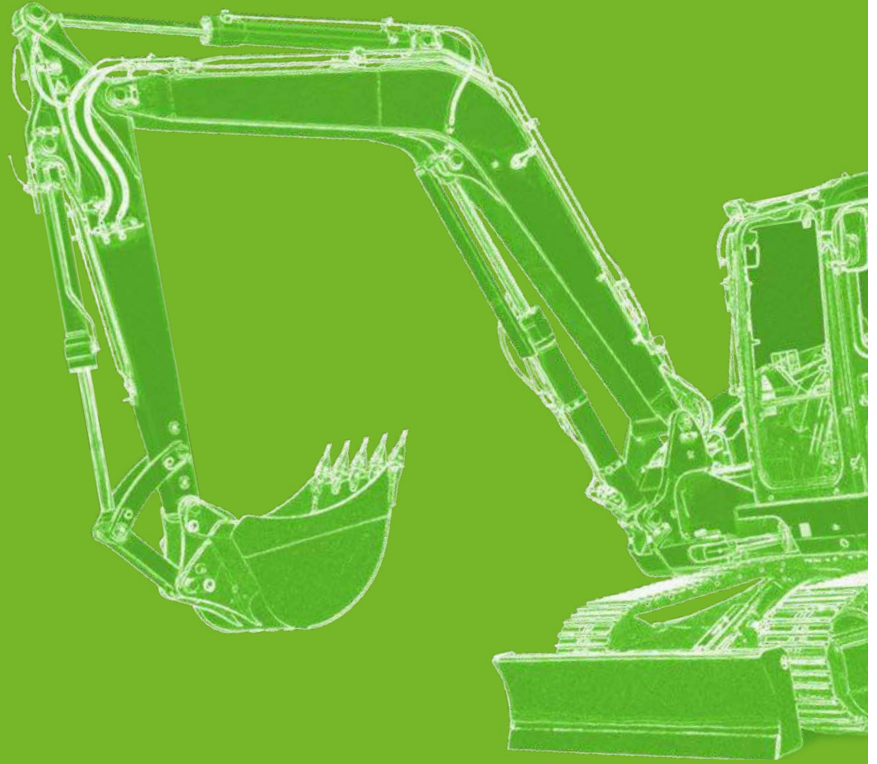



# Crawler excavators – the most popular machines of 2016

We analyzed a total of 1.302.373 visitors clicks on machines on [LECTURA Specs](#) over the last year to find out which machine is 2016's most popular. And the winner is ... **CRAWLER EXCAVATORS!**


Keep reading for a closer look at these powerful machines!




## Top 5 models (out of 1.970)

-  **Caterpillar 320 CL** / 1,26 % / 1.533 pageviews


---

-  **Volvo EC 480 DL** / 1,12 % / 1.460 pageviews


---

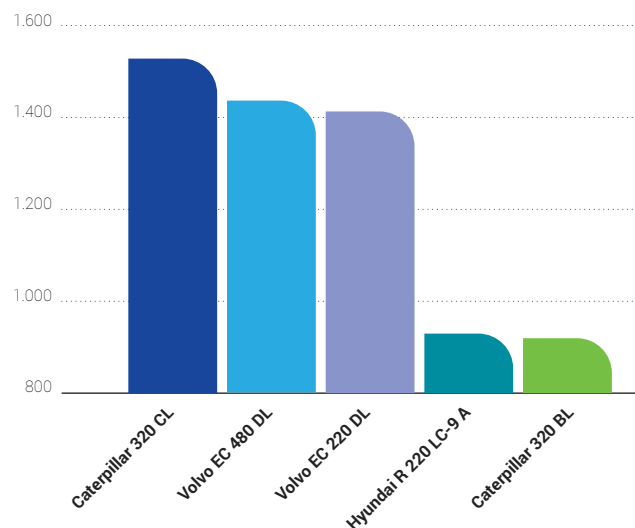
-  **Volvo EC 220 DL** / 1,10 % / 1.427 pageviews

---

-  **Hyundai R 220 LC-9 A** / 0,71 % / 922 pageviews

---






-  **Caterpillar 320 BL** / 0,70 % / 910 pageviews

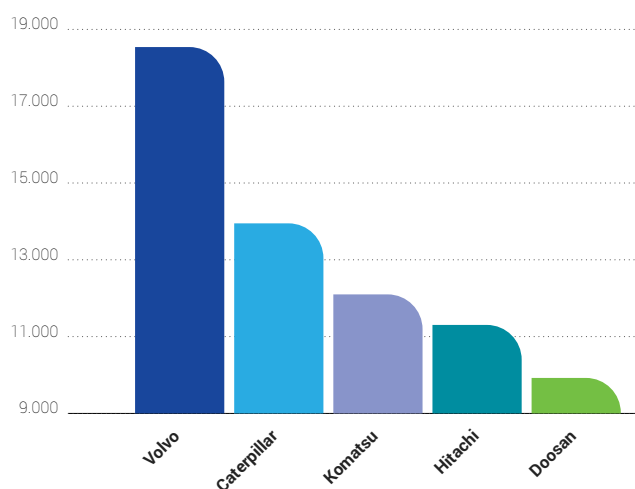


This report was compiled from 1.302.373 model pageviews on [LECTURA Specs](#) in 2016.

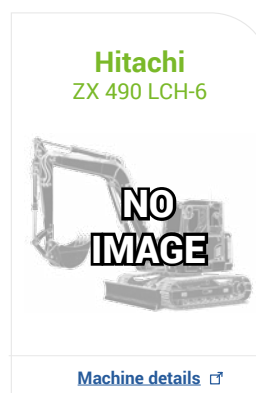
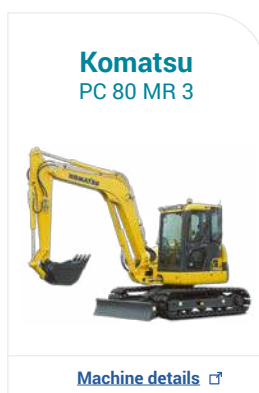
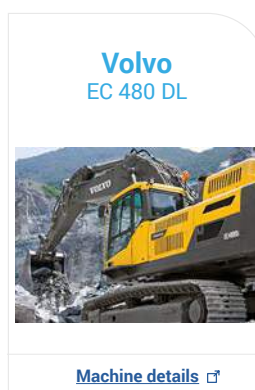
[LECTURA Specs](#) is a FREE reference guide that gives you access to specifications, pictures, videos, and data sheets of over 96.500 models of heavy machinery for various industries, including construction, agriculture, material handling, and much more. This analysis is based on [LECTURA Specs](#) website pageviews and may not reflect the current market situation.

## Top 5 manufacturers (out of 71)

	<b>Volvo</b> / 14,25 % / 18.516 pageviews
	<b>Caterpillar</b> / 10,68 % / 13.876 pageviews
	<b>Komatsu</b> / 9,44 % / 12.269 pageviews
	<b>Hitachi</b> / 8,62 % / 11.200 pageviews
	<b>Doosan</b> / 7,54 % / 9.802 pageviews



## Top 5 manufacturers, flagship model

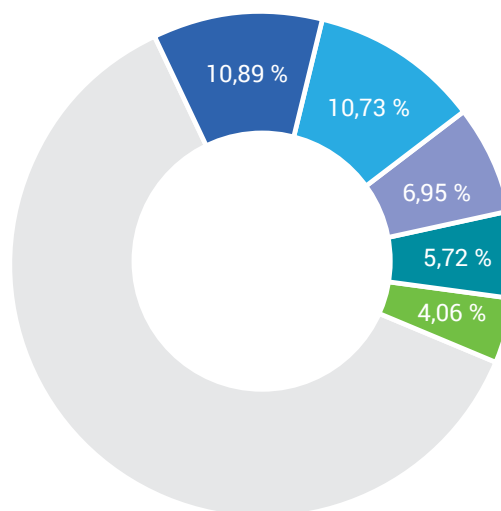


This report was compiled from 1.302.373 model pageviews on [LECTURA Specs](#) in 2016.

[LECTURA Specs](#) is a FREE reference guide that gives you access to specifications, pictures, videos, and data sheets of over 96.500 models of heavy machinery for various industries, including construction, agriculture, material handling, and much more. This analysis is based on [LECTURA Specs](#) website pageviews and may not reflect the current market situation.

## Most visitors (by country)

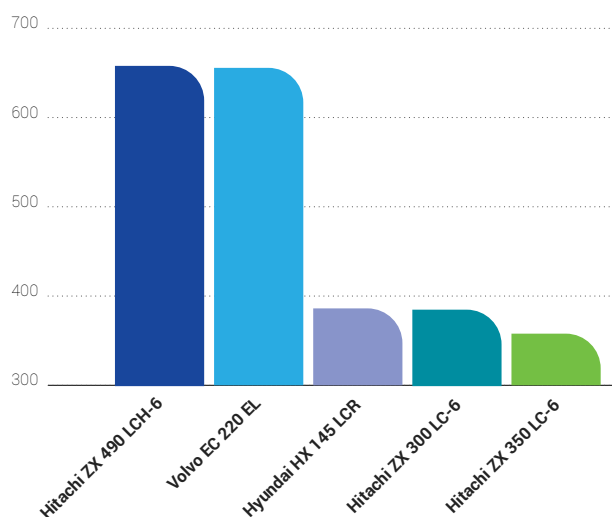
	<b>United States</b> / 10,89 % / 14.146 pageviews
	<b>France</b> / 10,73 % / 13.939 pageviews
	<b>Germany</b> / 6,95 % / 9.025 pageviews
	<b>Italy</b> / 5,72 % / 7.428 pageviews
	<b>Spain</b> / 4,06 % / 5.271 pageviews
	<b>Other 185 countries in category</b> / 61,65 %



## Top 5 current models

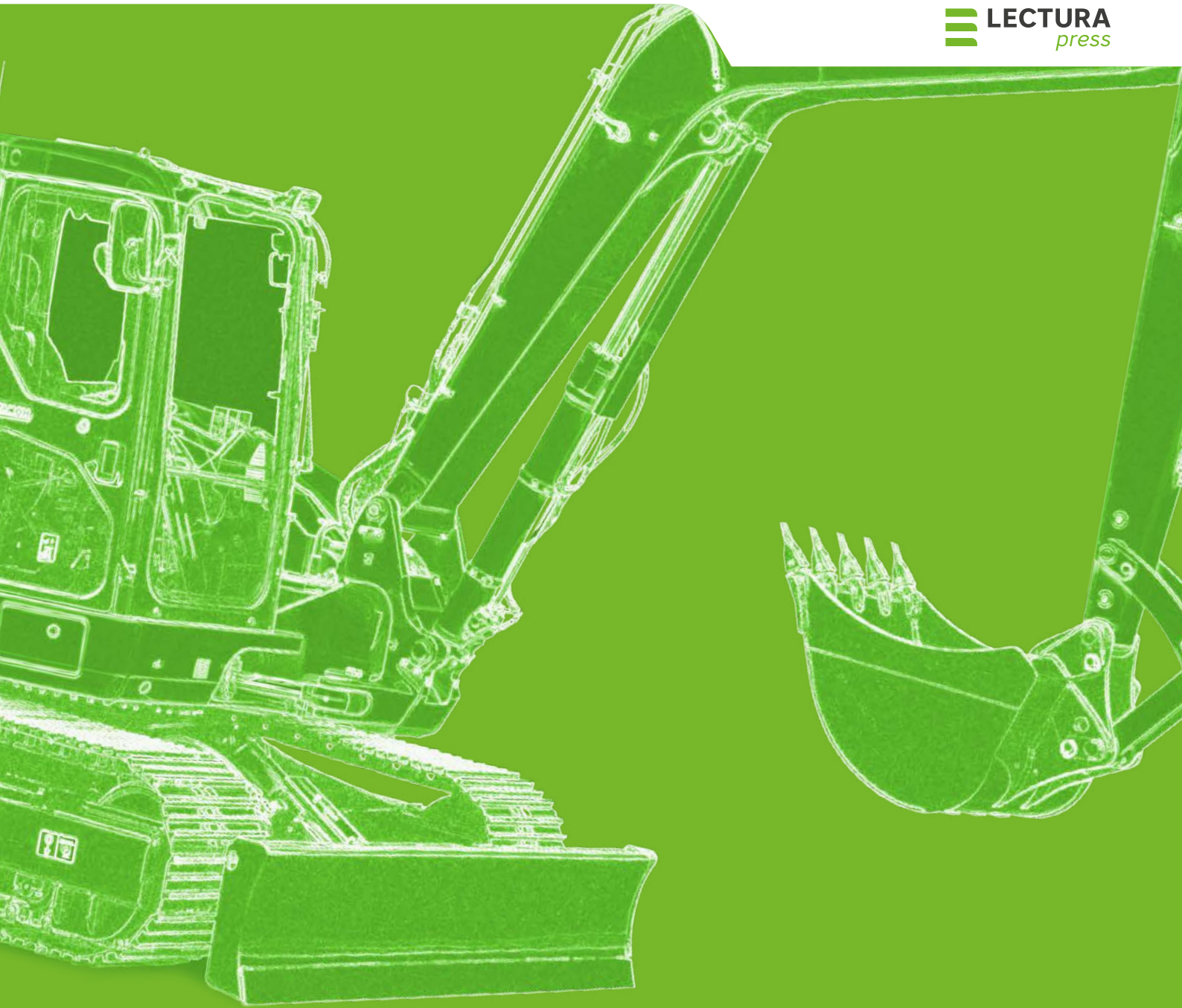
The most searched models are 5 years old but we were interested in current models, too.

	<b>Hitachi ZX 490 LCH-6</b> / 668 pageviews
	<b>Volvo EC 220 EL</b> / 663 pageviews
	<b>Hyundai HX 145 LCR</b> / 390 pageviews
	<b>Hitachi ZX 300 LC-6</b> / 390 pageviews
	<b>Hitachi ZX 350 LC-6</b> / 366 pageviews



This report was compiled from 1.302.373 model pageviews on [LECTURA Specs](https://lectura-specs.com) in 2016.

[LECTURA Specs](https://lectura-specs.com) is a FREE reference guide that gives you access to specifications, pictures, videos, and data sheets of over 96.500 models of heavy machinery for various industries, including construction, agriculture, material handling, and much more. This analysis is based on [LECTURA Specs](https://lectura-specs.com) website pageviews and may not reflect the current market situation.



After an extensive overhaul process, [LECTURA Specs](#) re-launched in October 2015 and the amounts of incoming traffic and machine information have been increasing ever since. This puts a huge amount of data at our disposal, which we can then analyze to create reports focused on one type of machine, just like this one.

Would you like a similar detailed analysis of a different type of machine, or even a specific brand? Let us know!

**Petr Thiel, LECTURA managing director,**  
[p.thiel@lectura.de](mailto:p.thiel@lectura.de)